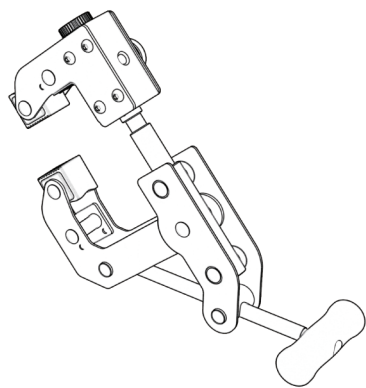
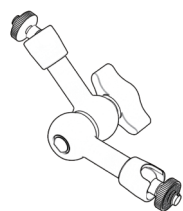


1 Package Contents

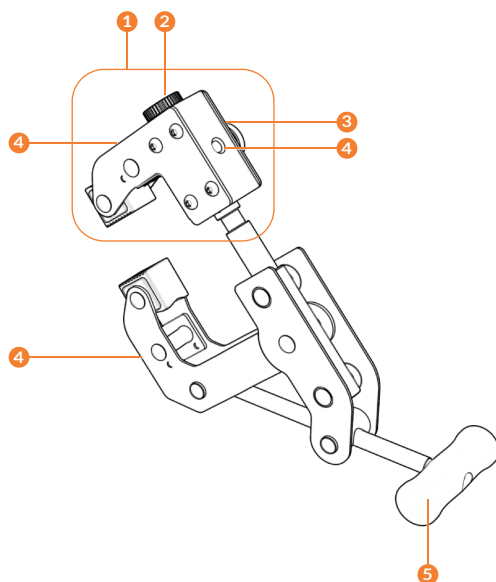


Camera Clamp

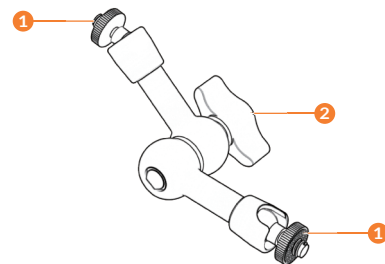


Magic Arm

2 Device Parts

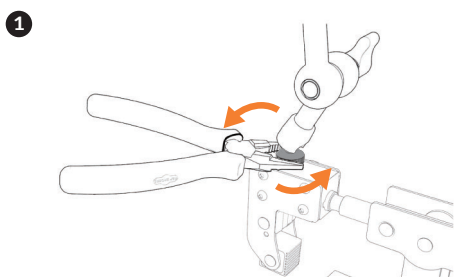


1. Clamp Head
2. Extension Pole Hole Knob
3. Clamp Head Knob
4. Mounting Hole (1/4") (x3)
5. Handle

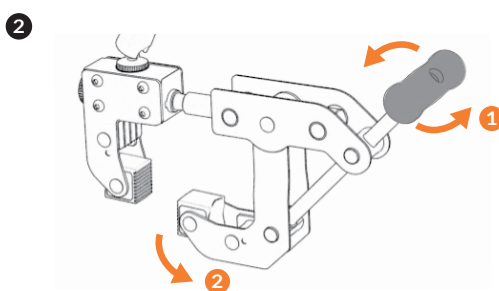


1. Mounting Platform (1/4")
2. Flex Arm Knob

3 Assembling

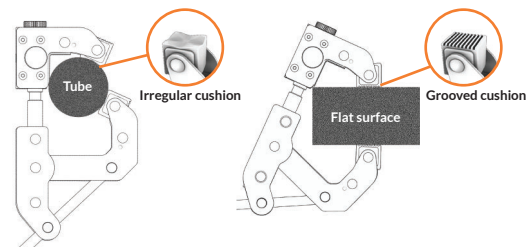


Mount the magic arm onto clamp.
Use needle-nose pliers to secure the magic arm.



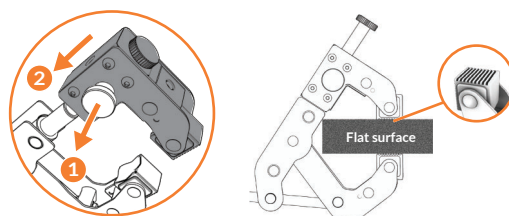
Swivel the handle to release the clamp.

3 -1 For tube or flat surface (< 3.5 in (90 mm))

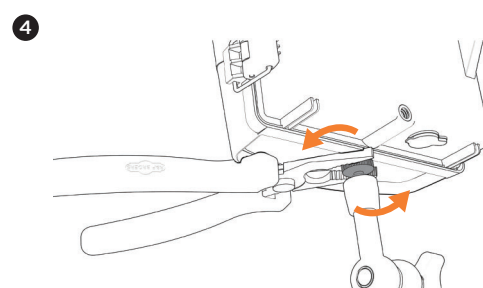


Mount the clamp.
Tighten it.

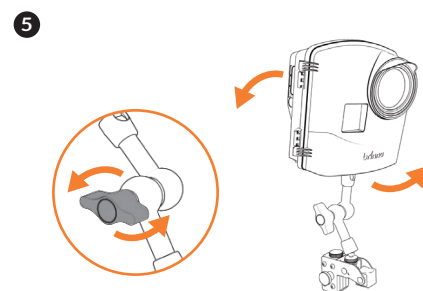
3 -2 Better grasp for flat surface under 2.4 in (60 mm)



Pull clamp head knob and slide clamp head down.
Mount the clamp.
Tighten it.



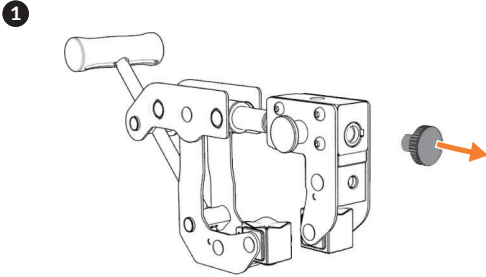
Mount the camera onto the mounting platform.
Use needle-nose pliers to secure the camera.



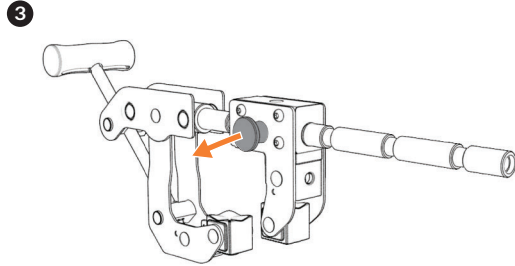
Swivel the flex arm knob to adjust the shooting angle.
Tighten it.

4 Extend Clamping Range

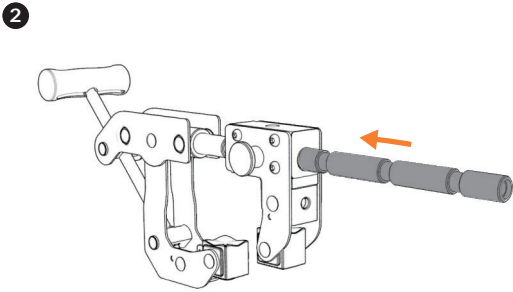
** Extension pole is not included in BCC2000 package **



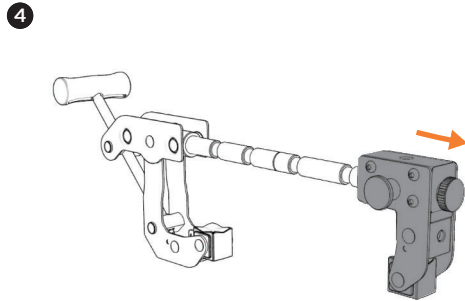
Remove the extension pole hole knob.



Pull out the clamp head knob.



Install extension pole.



Slide the clamp head down to the desired position.
Tighten the extension pole hole knob.

Camera Clamp Kit

User Manual

www.brinno.com

5 Specifications

Model	ACC1000
Contents	Camera clamp, magic arm
Camera Mount Screw	1/4"
Clamping Range	Tube: 0.4- 3.5 in (10 - 90 mm) Flat surface: 0.04- 3.5 in (1 - 90 mm)
Magic Arm Load Capacity	6.6 lb (3 KG)
Clamp Load Capacity	110 lb (50 KG) (without extension pole)
Size (LxWxH)	Folded: 8.2x 3.7x 1.5 in (209x 94x 39 mm) Extended: 6.9x 7.1x 2.4 in (176x 180x 60 mm)
Weight	26.5 oz (750 g) (included Magic Arm)
Materials	Clamp: Stainless, aluminum Magic Arm: Stainless, metal, aluminum



For manuals in other languages, visit
www.brinno.com/support

The product features, specifications sheets and instructions may differ from actual products. Please refer to Brinno official site for the latest version of user manual.

